

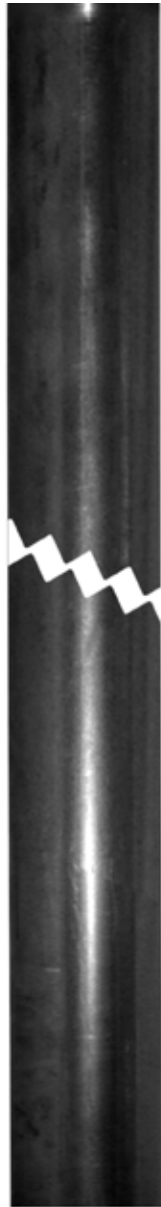


Drill rods and couplings	1
Flush joint casing	2
Heat treated wireline drill rods	3
Heat treated wireline drill rods	4
Inner-tubes	5
Outer-tubes	6
Loading Sheet	7

## We manufacture

MBI Drilling Products flush joint casing and drilling rods are recognized worldwide for their quality. Our rods and casing are threaded by a qualified team with many years of experience in drilling product manufacturing. Each and every rod and casing undergoes strict quality control throughout the entire manufacturing process.

# DRILL RODS AND COUPLINGS



Drill rod complete with coupling



Drill rod coupling

Description	Length	Part No	Weight	
			lb	kg
AW	1'	RAW1001	5.04	2.3
AW	2'	RAW1002	8.76	4.0
AW	3'	RAW1003	11.95	5.4
AW	5'	RAW1005	19.92	9.1
AW	10'	RAW1010	38.92	17.7
BW	1'	RBW1001	8.37	3.8
BW	2'	RBW1002	14.15	6.4
BW	3'	RBW1003	18.99	8.6
BW	5'	RBW1005	31.65	14.4
BW	10'	RBW1010	63.15	28.7
NW	1'	RNW1001	9.20	4.2
NW	2'	RNW1002	18.73	8.5
NW	3'	RNW1003	18.44	8.4
NW	5'	RNW1005	30.73	14.0
NW	10'	RNW1010	56.50	25.7
HW	1'	RHW1001	14.38	6.5
HW	2'	RHW1002	31.65	14.4
HW	3'	RHW1003	42.50	9.6
HW	5'	RHW1005	65.15	16.0
HW	10'	RHW1010	122.80	55.8

## Drill Rod Couplings

Description	Part No
AW	RAW1000
BW	RBW1000
NW	RNW1000
HW	RHW1000



Casing

Description	Length	Part No	Weight	
			lb	kg
BW	2'	CSB1002	14.00	6.4
BW	5'	CSB1005	35.00	15.9
BW	10'	CSB1010	70.00	31.8
NW	2'	CSN1002	17.00	7.7
NW	5'	CSN1005	46.50	19.3
NW	10'	CSN1010	86.00	39.10
HW	2'	CSH1002	21.50	9.75
HW	5'	CSH1005	58.00	26.40
HW	10'	CSH1010	116.50	53.00
HWT	2	CSHWT1202	21.50	9.75
HWT	5'	CSHWT1205	58.00	26.40
HWT	10	CSHWT1210	116.50	53.00
PW	10'	CSP1002	28.50	13.00
PW	5'	CSP1005	70.00	31.80
PW	10'	CSPW1010	144.00	65.50
PWT	2'	CSPWT1202	28.50	13.00
PWT	5'	CSPWT1205	70.00	31.80
PWT	10'	CSPWT1210	144.00	65.50

**Metric**

BW	0.60 m	CSB1502	14.00	6.40
BW	1.50 m	CSB1505	35.00	15.90
BW	3.00 m	CSB1510	70.00	31.80
NW	0.60 m	CSN1502	17.00	7.70
NW	1.50 m	CSN1505	42.50	19.30
NW	3.00 m	CSN1510	86.00	39.10
HW	0.60 m	CSH1702	21.50	9.75
HW	1.50 m	CSH1705	57.75	26.30
HW	3.00 m	CSH1710	115.50	52.50
HWT	0.60 m	CSHWT1702	21.50	9.75
HWT	1.50 m	CSHWT1705	57.75	26.30
HWT	3.00 m	CSHWT1710	115.50	52.50
PW	0.60 m	CSP1502	27.50	12.50
PW	1.5 m	CSP1505	69.00	31.40
PW	3.00m	CSPW1510	143.00	65.00
PWT	0.60m	CSPWT1702	28.50	13.00
PWT	1.5m	CSPWT1705	69.00	31.40
PWT	3.0m	CSPWT1710	143.00	65.00

# HEAT TREATED WIRELINE DRILL RODS



Wireline  
drill rod

Description	Length	Part No	Weight	
			lb	kg
B	2'	RB3102	8.00	3.6
B	5'	RB3105	20.00	9.1
B	10'	RB3110	40.00	18.2
N	2'	RN3102	10.50	4.8
N	5'	RN3105	25.00	11.4
N	10'	RN3110	51.00	23.2
H	2'	RH3102	15.50	7.0
H	5'	RH3105	38.50	17.5
H	10'	RH3110	77.00	35.0
HWT	2'	RHWT7202	23.00	10.5
HWT	5'	RHWT7205	58.00	26.4
HWT	10'	RHWT7210	116.50	53

### Metric

B	0.60 m	RB3602	8.00	3.6
B	1.50 m	RB3605	20.00	9.1
B	3.00 m	RB3610	40.00	18.2
N	0.60 m	RN3602	10.50	4.8
N	1.50 m	RN3605	25.00	11.4
N	3.00 m	RN3610	51.00	23.2
H	0.60 m	RH3602	15.20	6.9
H	1.50 m	RH3605	37.80	17.2
H	3.00 m	RH3610	76.00	34.5
HWT	0.60 m	RHWT7702	15.20	6.9
HWT	1.50 m	RHWT7705	57.75	26.3
HWT	3.00 m	RHWT7710	115.50	52.4

Description	Length	Part No	Weight	
			lb	kg
NM	2'	RNM3302	10.50	4.8
NM	5'	RNM3305	25.00	11.4
NM	10'	RNM3310	51.00	23.2
HM	2'	RHM3302	15.50	7.0
HM	5'	RHM3305	38.50	17.5
HM	10'	RHM3310	77.00	35.0

### Metric

NM	0.60 m	RNM3802	10.50	4.8
NM	1.50 m	RNM3805	25.00	11.4
NM	3.00 m	RNM3810	51.00	23.2
HM	0.60 m	RHM3802	15.20	7.0
HM	1.50 m	RHM3805	37.80	17.2
HM	3.00 m	RHM3810	76.00	34.5

# HEAT TREATED WIRELINE DRILL RODS



Description	Length	Part No	Weight	
			lb	kg
BT	2'	RBT5402	8.00	3.6
BT	5'	RBT5405	20.00	9.1
BT	10'	RBT5410	40.00	18.2
NT	2'	RNT5402	10.50	4.8
NT	5'	RNT5405	25.00	11.4
NT	10'	RNT5410	51.00	23.2
HT	2'	RHT5402	15.50	7.0
HT	5'	RHT5405	38.50	17.5
HT	10'	RHT5410	77.00	35.0

## Metric

BT	0.60 m	RBT5902	8.00	3.6
BT	1.50 m	RBT5905	20.00	9.1
BT	3.00 m	RBT5910	40.00	18.2
NT	0.60 m	RNT5902	10.50	4.8
NT	1.50 m	RNT5905	25.00	11.4
NT	3.00 m	RNT5910	51.00	23.2
HT	0.60 m	RHT5902	15.20	6.9
HT	1.50 m	RHT5905	37.80	17.2
HT	3.00 m	RHT5910	76.00	34.5

Description	Length	Part No	Weight	
			lb	kg
BTW	2'	RBTW6102	7.50	3.4
BTW	5'	RBTW6105	17.50	8.0
BTW	10'	RBTW6110	34.50	15.7
NTW	2'	RNTW6102	10.00	4.5
NTW	5'	RNTW6105	25.00	11.4
NTW	10'	RNTW6110	50.00	22.7
HTW	2'	RHTW6102	13.56	6.16
HTW	5'	RHTW6105	33.90	15.4
HTW	10'	RHTW6110	67.80	30.8

## Metric

BTW	0.60 m	RBTW6602	6.80	3.1
BTW	1.50 m	RBTW6605	17.00	7.95
BTW	3.00 m	RBTW6610	34.00	15.5
NTW	0.60 m	RNTW6602	9.80	4.5
NTW	1.50 m	RNTW6605	24.50	11.2
NTW	3.00 m	RNTW6610	49.05	22.3
HTW	0.60 m	RHTW6602	13.53	6.14
HTW	1.50 m	RHTW6605	33.30	15.2
HTW	3.00 m	RHTW6610	66.70	30.3



Description	Length	Chrome or Std	Part No
B	5'	Std	ITB2125
B	10'	Std	ITB2130
B	5'	Chrome	ITB2175
B	10'	Chrome	ITB2180
BTW	5'	Std	ITBTW2325
BTW	10'	Std	ITBTW2330
BTW	5'	Chrome	ITBTW2375
BTW	10'	Chrome	ITBTW2380
N	5'	Std	ITN2125
N	10'	Std	ITN2130
N	5'	Chrome	ITN2175
N	10'	Chrome	ITN2180
N-2	5'	Std	ITN2725
N-2	10'	Std	ITN2730
N-2	5'	Chrome	ITN2775
N-2	10'	Chrome	ITN2780
N-2	10'	Std Extenda	ITN2781
N-2	10'	Chrome	ITN2781CP
NTW	5'	Std	ITNTW2325
NTW	10'	Std	ITNTW2330
NTW	5'	Chrome	ITNTW2375
NTW	10'	Chrome	ITNTW2380
H	5'	Std	ITH2125
H	10'	Std	ITH2130
H	5'	Chrome	ITH2175
H	10'	Chrome	ITH2180
HTW	5'	Std	ITHTW2325
HTW	10'	Std	ITHTW2330
HTW	10'	Chrome	ITHTW2380



Description	Length	Chrome or Std	Part No
B	5'	Std	OTB2145
B	10'	Std	OTB2150
B	5'	Chrome	OTB2185
B	10'	Chrome	OTB2190
BTW	5'	Std	OTBTW2345
BTW	10'	Std	OTBTW2350
BTW	5'	Chrome	OTBTW2385
BTW	10'	Chrome	OTBTW2390
N	5'	Std	OTN2145
N	10'	Std	OTN2150
N	5'	Chrome	OTN2185
N	10'	Chrome	OTN2190
NTW	5'	Std	OTNTW2367
NTW	5'	Chrome	OTNTW2367CP
NTW	10'	Std	OTNTW2368
NTW	10'	Chrome	OTNTW2368CP
H	5'	Std	OTH2145
H	10'	Std	OTH2150
H	5'	Chrome	OTH2185
H	10'	Std	OTH2190
HTW	5'	Std	OTHTW2345
HTW	10'	Std	OTHTW2350
HTW	5'	Chrome	OTHTW2385
HTW	10'	Chrome	OTHTW2390
P	5'	Std	OTP2145
P	5'	Chrome	OTP2185

## LOADING SHEET

Description	Length	Quantity/ bundle	Weight/bundle		Length (in)	Height (in)	Width (in)
			lb	kg			
<b>WIRELINE</b>							
<b>DRILL RODS</b>							
B	10'	19	780	354.1	126	10 1/4	11 5/8
N	10'	19	1 005	456.3	126	13	14 3/4
H	10'	19	1 500	681.0	126	16 1/8	18 1/2
HM	10'	19	1 500	681.0	126	16 1/8	18 1/2
HMC	10'	19	1 200	544.8	126	16 1/8	18 1/2
HW	10'	7	840	381.4	126	16 1/8	18 1/2
P	10'	7	775	351.9	126	13	14 3/4

### Thin Wall

ATW	10'	19	520	236.1	126	8	9 1/2
BTW	10'	19	675	306.5	126	10 5/8	12
NTW	10'	19	980	444.9	126	13 1/2	15 3/8

### CASING

BW	10'	19	1 350	612.4	126	13 1/2	15 3/8
NW	10'	19	1 690	766.6	126	16 1/8	18 1/2
HW	10'	7	840	381.0	126	13	14 3/4
PW	10'	7	1 030	467.2	126	13	14 3/4

### METRIC

## WIRELINE

### DRILL RODS

B	3m	19	780	354.1	126	10 1/4	11 5/8
N	3m	19	985	447.2	126	13	14 3/4
H	3m	19	1 480	671.9	126	16 1/8	18 1/2
HM	3m	19	1 480	671.9	126	16 1/8	18 1/2
HW	3m	7	825	374.6	126	16 1/8	18 1/2
P	3m	7	750	340.5	126	13	14 3/4

### Thin Wall

ATW	3m	19	515	233.8	126	8	9 1/2
BTW	3m	19	665	301.9	126	10 5/8	12
NTW	3m	19	975	442.7	126	13 1/2	15 3/8

### CASING

BW	3m	19	1 340	607.8	126	13 1/2	15 3/8
NW	3m	19	1 680	762.0	126	16 1/8	18 1/2
HW	3m	7	825	374.2	126	13	14 3/4
PW	3m	7	1 025	464.9	126	13	14 3/4

## 20' CONTAINER (Full Load)

Description	Weight/bundle	
	lb	kg
<b>B Drill Rod</b>		
* 56 bundles of 19 (1 064 pieces)	43 400	19 703.6
* packaging	500	227.0
Total Weight	43 900	19 930.6

### N Drill Rod

* 36 bundles of 19 (684 pieces)	35 460	16 098.8
* packaging	500	227.0
Total Weight	35 960	16 325.8

### H Drill Rod

* 25 bundles of 19 (684 pieces)	37 000	16 798.0
* packaging	500	227.0
Total Weight	37 500	17 025.8

## 20' CONTAINER (1/4 to 3/4 Full)

Description	Weight/bundle	
	lb	kg
<b>HW Drill Rod</b>		
* 10 bundles of 19 (190 pieces)	14 800	6 713.1
<b>HW Casing</b>		
	<b>500</b>	<b>227.0</b>
* 24 bundles of 7 (168 pieces)	16 800	7 620.4
* packaging	500	227.0
Total Weight	35 100	14 560.6

### N Drill Rod

* 24 bundles of 19 (456 pieces)	23 640	10 732.6
---------------------------------	--------	----------

### NW Casing

* 10 bundles of 19 (190 pieces)	16 800	7 627.2
* packaging	500	227.0
Total Weight	40 940	18 586.8



20' CONTAINER (Full Load - Mixed)

Description	Weight/bundle	
	lb	kg
<b>BW Drill Rod 3m</b>		
* 27 bundles of 19 (513 pieces)	20 925	9 500.0
<b>N Drill Rod 3m</b>		
* 21 bundles of 19 (399 pieces)	20 685	9 391.0
* packaging	500	227.0
Total Weight	42 110	19 117.8
<b>N Drill Rod 3m</b>		
* 18 bundles of 19 (342 pieces)	17 730	8 049.4
<b>H Drill Rod 3m</b>		
* 15 bundles of 19 (285 pieces)	22 200	10 078.8
* packaging	500	227.0
Total Weight	40 430	18 355.2
<b>HW Drill Rod 10'</b>		
* 36 bundles of 7 (252 pieces)	30 240	13 956.0
* drill parts may be added to complete the load		
* packaging	500	227.0
Total Weight	30 740	13 956.0
<b>P Drill Rod 10'</b>		
* 36 bundles of 7 (252 pieces)	27 900	12 666.6
* drill parts may be added to complete the load		
* packaging	500	227.0
Total Weight	28 400	12 893.6

40' CONTAINER (Full Load)

Description	Weight/bundle	
	lb	kg
<b>HW Drill Rod 3m</b>		
* 68 bundles of 7 (476 pieces)	56 100	25 401.4
* packaging	1 000	454.0
Total Weight	57 100	25 855.4
<b>BW Casing 10'</b>		
* 42 bundles of 19 (798 pieces)	56 700	25 719.0
* packaging	1 000	454.0
Total Weight	57 700	25 173.0
<b>NW Casing 10'</b>		
* 33 bundles of 19 (627 pieces)	55 770	25 297.1
* packaging	1 000	454.0
Total Weight	56 770	25 751.1
<b>HW Casing 10'</b>		
* 67 bundles of 7 (469 pieces)	56 280	25 528.4
* packaging	1 000	454.0
Total Weight	57 280	25 982.4
<b>PW Casing 10'</b>		
* 55 bundles of 7 (385 pieces)	56 650	25 696.3
* packaging	1 000	454.0
Total Weight	57 650	26 150.3
<b>BW Casing 3m</b>		
* 42 bundles of 19 (798 pieces)	56 280	25 528.4
* packaging	1 000	454.0
Total Weight	57 280	25 982.4
<b>NW Casing 3m</b>		
* 33 bundles of 19 (627 pieces)	55 440	25 147.4
* packaging	1 000	454.0
Total Weight	56 440	25 601.4
<b>HW Casing 3m</b>		
* 67 bundles of 7 (469 pieces)	56 100	25 446.8
* packaging	1 000	454.0
Total Weight	57 100	25 900.8
<b>PW Casing 3m</b>		
* 55 bundles of 7 (385 pieces)	56 375	25 571.5
* packaging	1 000	454.0
Total Weight	57 375	26 025.5

CONTAINER SIZES

Size	Length	Width	Height
20' Container	18'	7' 6"	7' 6"
40' Container	39'	7' 6"	7' 6"

Note: Certain restrictions may apply.